



中山巨新机械设备有限公司
ZHONGSHAN GENXIN MACHINERY EQUIPMENT CO.,LTD

PRODUCT SOLUTIONS

M1300 MULCHER

M1300 MULCHER



MULCHER FOR JCB 4CX BACKHOE LOADER

Application Area

M1300 MULCHER is a professional landscaping plants pruning equipment that is used with all kinds of excavators, excavator loader, loader, etc. It is mainly used for pruning shrubs, hedge pruning, tall branches pruning, lawn pruning, etc.

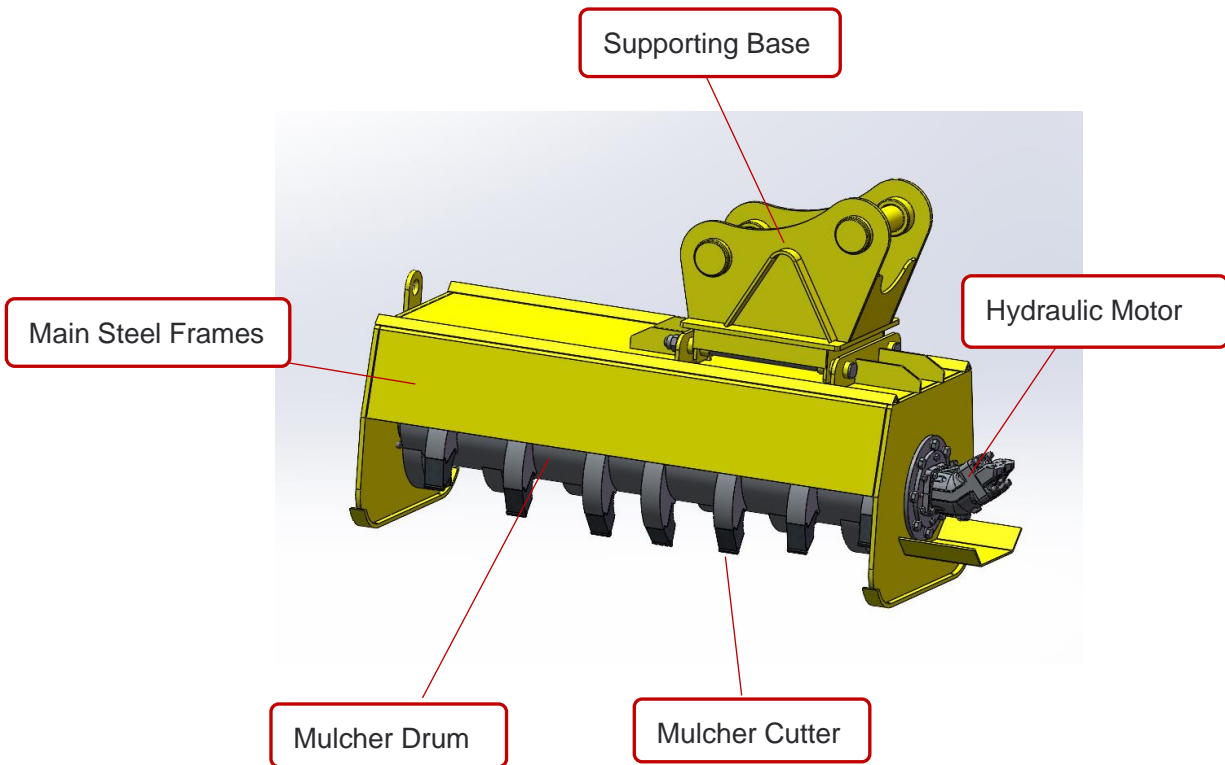
Working Principle

The equipment is composed of main steel frames, supporting base, mulcher drum, mulcher cutters, hydraulic system and electrical controller;

The equipment takes advantage of the excavator's strong hydraulic power, through a reasonable hydraulic line and hydraulic valve set to transfer power to the hydraulic motors in the device, thereby driving the mulcher drum mounted on the hydraulic motors to rotate to achieve cutting plant;

A controller installed in the cab remotely controls the drum action and the frame rotation action.

Construction



Electrical Controller

Detail Introduction

1、General Parameters

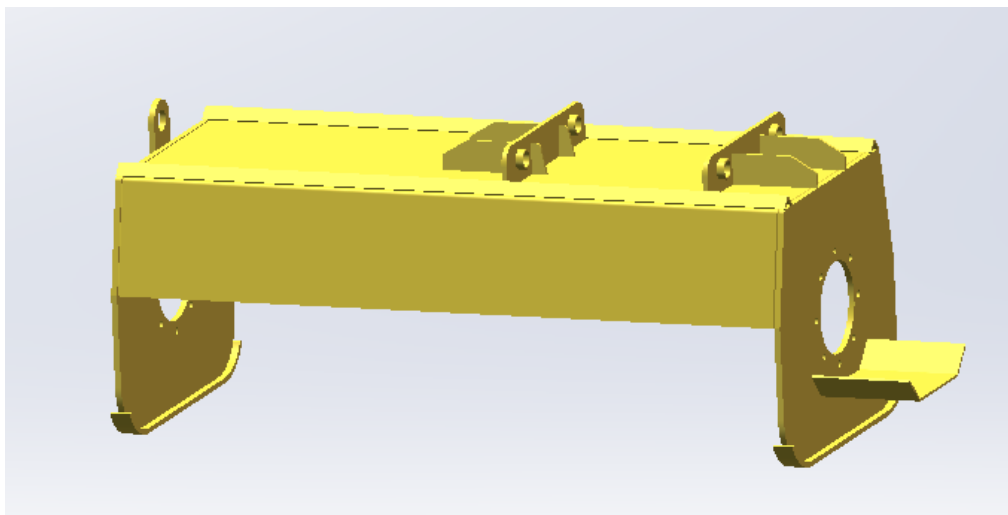
The total weight of the equipment is 500kg;

It can connect to the backhoe loader quickly;

It can effectively use the power of the backhoe loader;

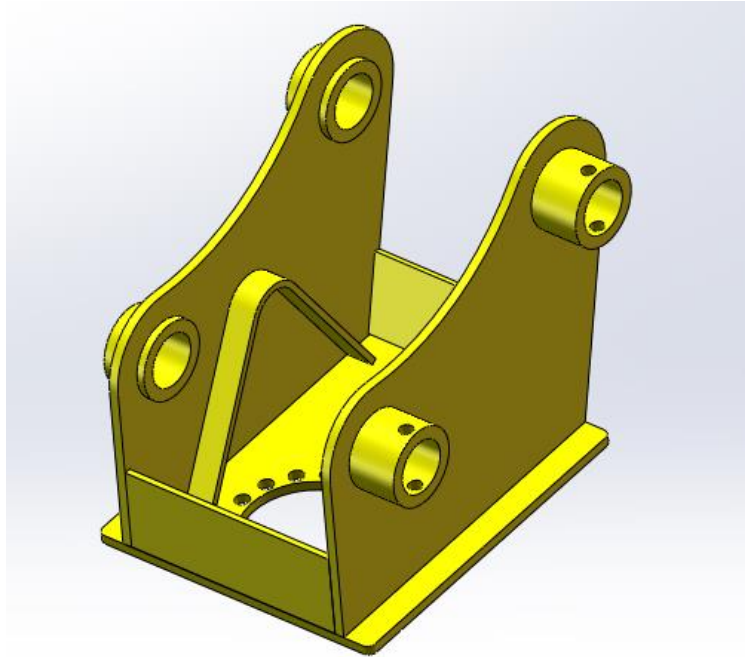


2、Main Steel Frames



The mulcher uses high quality steel, strong and durable

3、Supporting Base

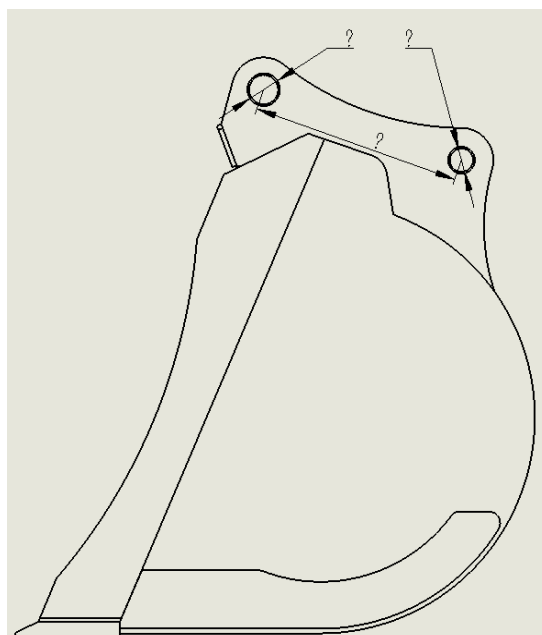


Specially made supporting base

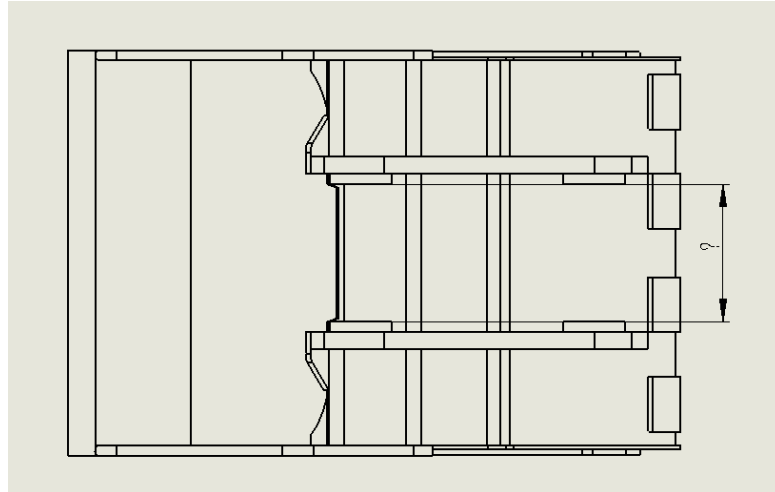
The following parameters need to be determined before manufacturing:

(1) Measure the two axle or axle hole diameter dimensions of the backhoe loader digging bucket;

Measure the two axle hole distance dimensions of the backhoe loader digging bucket



(2) Measure the distance between the vertical plates on both sides of the digging bucket supporting base;



4、Hydraulic system

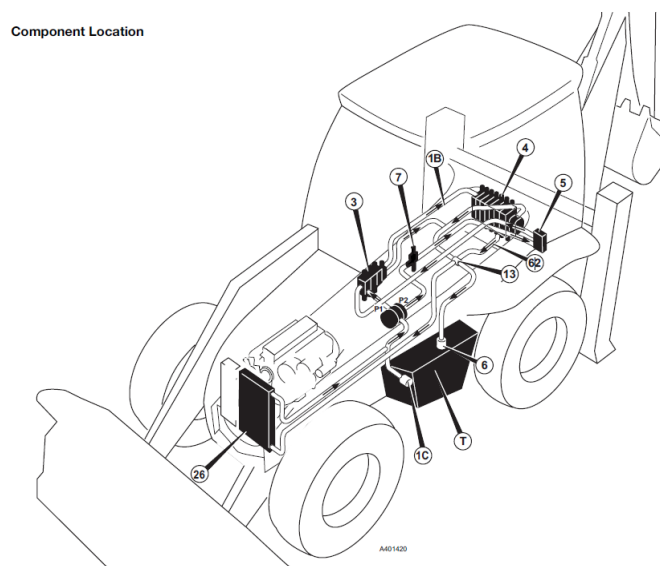
The hydraulic system is composed of hydraulic valve group, hydraulic hose, slewing drive, swivel joint, and hydraulic motor;

The following parameters need to be determined before retrofitting the hydraulic system:

(1) Confirm the location of auxiliary valve No. 5 in the following figure, If there is no auxiliary valve, contact JCB local supplier to install.

Measure the distance between the digging bucket to the auxiliary valve;

Measure the diameter dimensions of the service ports of the auxiliary valve.



(2) Confirm the location of hydraulic tank No.T in the figure above;

Measure the distance between the digging bucket to the tank;

Measure the diameter dimensions of oil return hole of the tank.

(3) We will reserve 3 hydraulic hoses, one of which is connected to the A service ports of the auxiliary valve, another is connected to the B service ports of the auxiliary valve, the last is connected to the oil return hole of the tank; They need to be connected by transition joints and quick couplers.

5、Electrical controller

The trimmer have a controller with three switches- emergency stop switch, blade rotary switch, frame rotary switch;

The following parameters need to be determined before retrofitting the electrical system:

(1) Confirm the system control voltage of the JCB machine,12V or 24V

(2) The controller needs a live wire from the JCB machine;

(3) Confirm the controller of the auxiliary valve, and confirm which switch controls the forward rotation of the blade, and then parallel a self-locking switch. If the switch is stepped on by foot, no change is required.

Performance advantage

● Powerful

The mulcher effectively use the power of the backhoe loader, born with powerful.

More powerful output with a piston motor.

The staggered tooth design reduces stalling and jamming.

The mulcher can trim branches up to 250mm diameter.

● Good applicability

The mulcher can be used with all kinds of backhoe loader and excavators, given full play to the potential of existing backhoe loader and excavators

● Easy Maintenance

Access internal components quickly and easily with bolt-on service panels.

The motor is integrated into the frame to protect it from dust, damage, and impact from falling debris.

Ensure service panel security with access bolts recessed into the panel, protecting them from debris.

Get back to work faster with field-replaceable wear parts.

● **Prioritized Safety**

The steel frames keeps the work environment and equipment safe by dispersing materials according to your application and surroundings.

Flow control valve protects the motor from excessive flow.

Ground-level primary grease points keep you safe while performing daily maintenance.

Specification

| M1300 MULCHER | |
|----------------------------------|--|
| Model | M1300 MULCHER |
| Overall Dimensions | 1600×500×1050 mm (Length x Width x Height) |
| Weight | 500kg |
| Mode of Hydraulic Motors | Piston motor 34cc |
| System Control Voltage | 12V |
| Effective Cutting Width | 1300mm |
| Hydraulic System Pressure | 20-25 MPa (200-250 BAR) |
| Max Oil Flow of Hydraulic System | 50-70 L/min |
| Drum rotating speed | ≤2200 rpm |
| Cutting diameter | ≤250mm |